



Manufacturing Execution Systems for the Automotive Industry

Trends

The automotive industry is changing more rapidly than ever before. To satisfy customers, you need to bring new features to market faster, innovate quickly, and comply with stricter governmental and sustainability requirements.



Time to market



Innovation speed



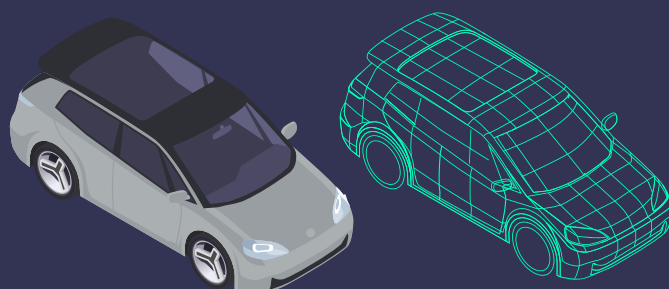
Regulations and sustainability requirements



By collecting and using data through the digital twin of production and plant, companies will win in the future.

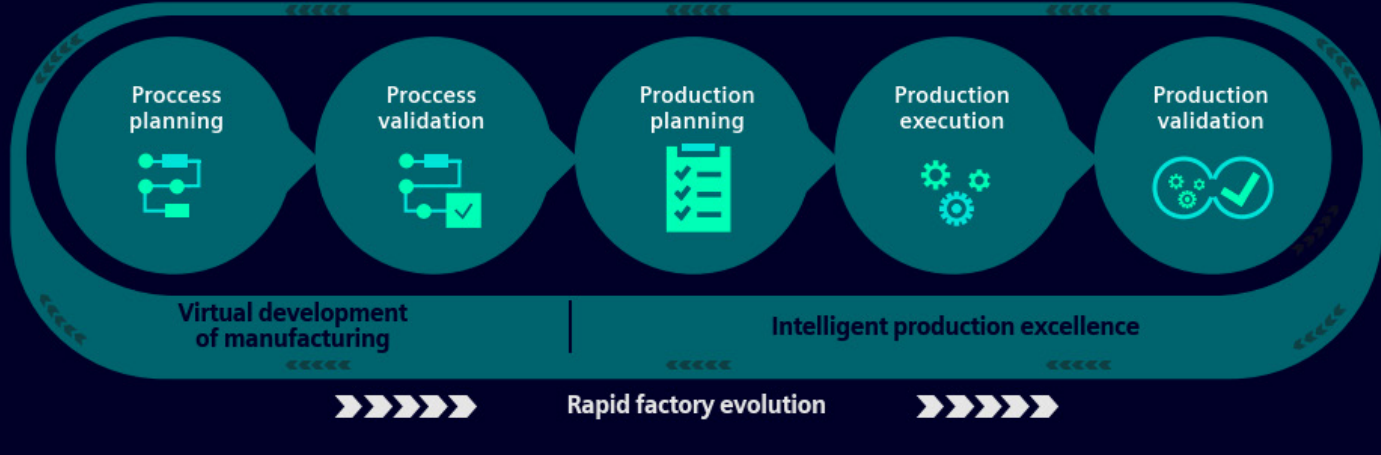
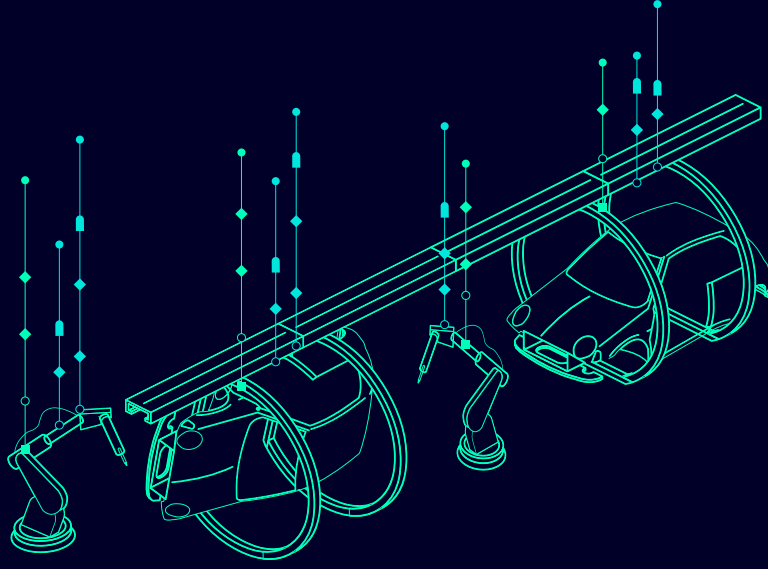
Explosion of complexity

Intensified competition, changing consumer demands and have increased complexity.

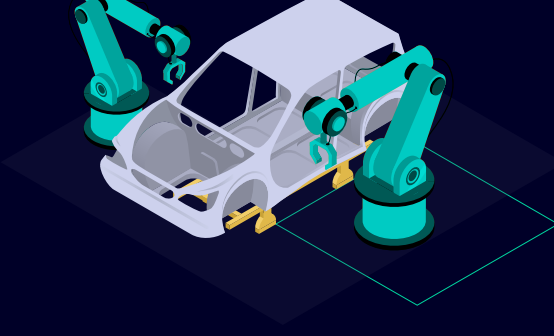


Siemens can help

Modernize your manufacturing process by connecting the data of all engineering disciplines to the knowledge of your shop floor. Monitoring performance and predicting operational issues in real-time, by using sensors, smart devices, and IoT technology, you will have a complete loop of manufacturing communication. Leverage a virtual replication of your entire production plan to eliminate the iterative element of physical commissioning.



To guarantee a successful implementation, these are **5 key success factors for a successful MOM implementation in the automotive industry**

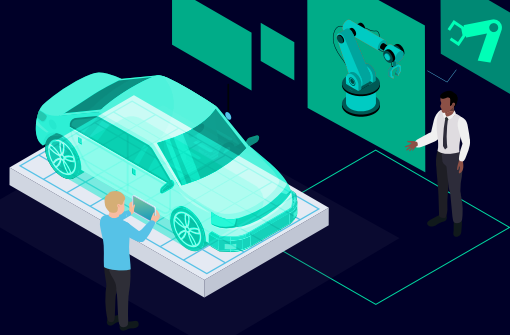


IT2OT Convergence

We deliver an integrated MES and automation landscape, starting with a focused connectivity, and expanding as needed, leveraging our end-to-end portfolio.

Holistic View

Our vision is to provide a comprehensive offering for Automotive manufacturing operations to support all business-critical applications.



OOTB Approach

We continuously invest in innovation to adopt new technologies and enrich our industry-specific capabilities, leveraging project experiences.

Industry Expertise

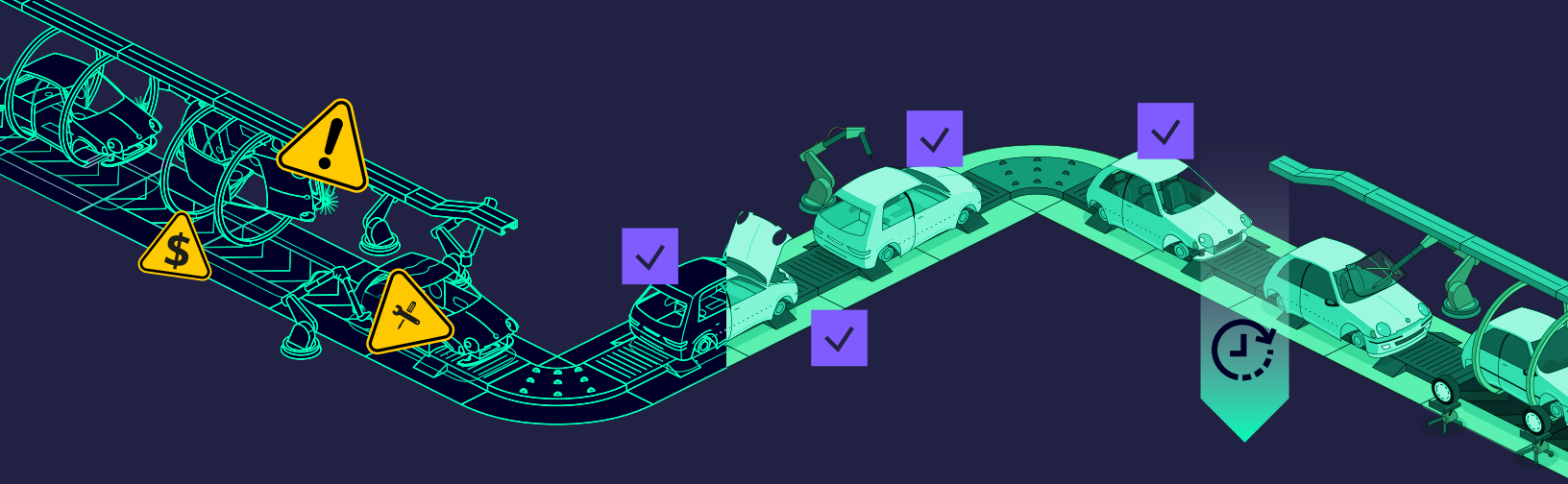
We provide industry knowledge and domain expertise to advise you during deployments and facilitate organization change management.



Think Big. Start Small. Scale Fast.

We focus on value creation, with solutions designed to achieve your business objectives at each stage of your project.

Opcenter is a holistic MOM solution that enables you to implement your strategy for the complete digitalization of manufacturing operations, providing end to end visibility into production.



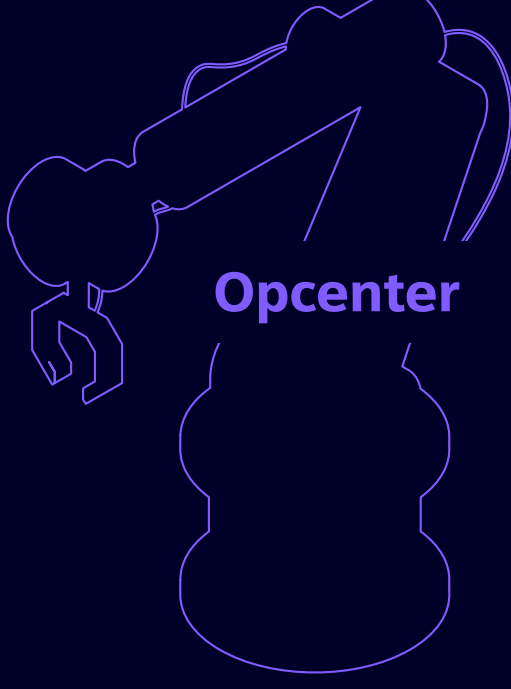
Opcenter's technologies and architecture adapt to the specific requirements of different industrial processes. The highly scalable platform delivers multiple capabilities and enables customers to combine **production efficiency with quality and visibility to reduce time to production.**

User Interface

Enhancing user experience with smart software interactions, easy to personalize using low-code powered by Mendix

Mobility

Managing operations from anywhere, with any device



Interoperability

Interfacing software solutions efficiently for faster data exchange



Extensibility

Facilitating software deployment, upgrades and extensions while reducing the TCO



Cloud support

Enhancing global visibility and real-time information for the whole organization

To fully leverage **the value of a digital twin we need MES solutions** that can connect to real production and provide meaningful information back to any point of the connected digital thread. With the following signature functionalities, we take care of this:

Variant configurations

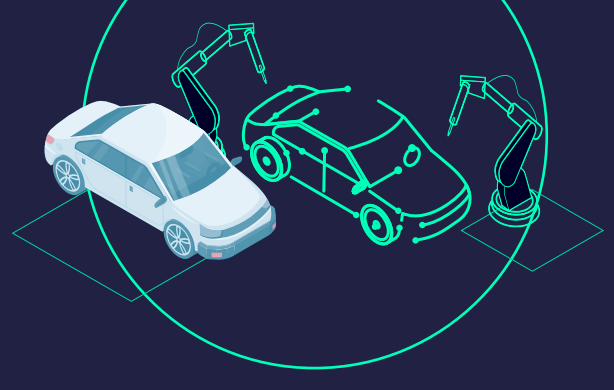
ERP order management

Production flow control

Std input/output message

Quality management

Opcenter Execution DISCRETE



Shopfloor material management

Qualification criteria

Work order creation

Operator terminal

Field OOTB standard connectivity

What's next?

Discover more about Manufacturing Execution Systems for the Automotive Industry

Learn more

