

DIGITAL INDUSTRIES SOFTWARE

Key features and functionalities of Opcenter Execution Discrete

Ready to get all the details on what you can expect from Opcenter Execution Discrete? This 25-plus-page guide breaks it down for you.

Introduction

Opcenter Execution Discrete is key to the Siemens closed-loop manufacturing solution. In this white paper, you will find descriptions of the key functionalities and features of the software, as well as its collaborations and integrations.

Opcenter Execution Discrete

To manage high-tech special devices, the user needs to manage production complexity, improve quality, reduce costs and shorten time-to-market.

Opcenter Execution Discrete (Opcenter EX DS) is used to implement a tailored MES for complex job-shop organized factories and provides the following functions:

- Production process and flow control
- MOM integrated with product lifecycle management

- Production route enforcement
- Execution management
- Tracking and tracing
- Defect tracking and nonconformance management
- Paperless manufacturing and reporting
- Electronic data collection
- Additive manufacturing support

Opcenter EX DS is a software product that was specifically designed and developed by Siemens by leveraging the Opcenter Execution Foundation technology.



Production process and flow control

- Allocate operator activity to production operations, steps, material items and resources
- Accurate WIP management of orders, operations, batches and serial numbers
- Distribute workload among operators at shift start, taking their skills into account; ability to define teams of operators working on the same operations



MOM integrated with PLM

- Ability to receive production processes – plain or nested – ready to be executed from a PLM system (specialized features are available in the case of Teamcenter Manufacturing in the context of the CLM solution)
- Ability to create configuration-specific work orders based on variant processes
- Ability to analyze the impact of changes on planned and running work orders
- Nonconformance feedback to PLM (specialized features are available in the case of Teamcenter Manufacturing in the context of the CLM solution)
- Ability to expose plant resources from MOM to PLM to enable manufacturing engineers to address correct data

- Ability to define human resources with related skills needed to perform specific operations and ensure these constraints are followed during the production

Production route enforcement

- List operations on screen based on certified operator skills (required certificates, skills and skill level are defined at the operation level, typically in Teamcenter Manufacturing)
- Operator punch in/out on operations with time logging
- Check correctness of process steps execution
- Production scheduling using Preactor Advanced Scheduling (AS)

Execution management

- Display details of activities to be performed
- Part assembly declaration and tracking
- Tool usage declaration
- Check for part/tool correctness
- Ability to interact with external direct numerical control (DNC) system for computer numerical control (CNC) part program transfer
- Separate labor tracking on non-productive activities



Tracking and tracing

- Serial numbers of assembled materials
- Batch identifiers of transformed materials
- Measurement data collection
- Co-product tracking
- As-built report
- Genealogy report

Defect tracking and nonconformance

- Failure tracking
- Nonconformance management based on problem catalog
- Nonconformance lifecycle management
- Manage and execute rework processes
- Leverage the integration with Teamcenter Quality to perform planned quality inspections, including visual inspections

Paperless manufacturing and reporting

- Electronic work instructions
- Data collection points
- Barcode reading support

Additive manufacturing support

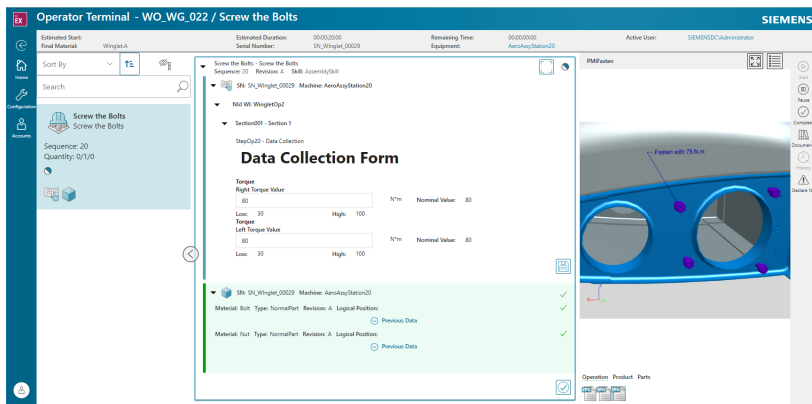
- Ability to interact with CAM systems to inject serial numbers in print job files; ability to interact with 3D-printers to transfer print job files
- Track and display the genealogy of powder material batches
- Track and display the lifecycle of substrates

Complex manufacturing terminal

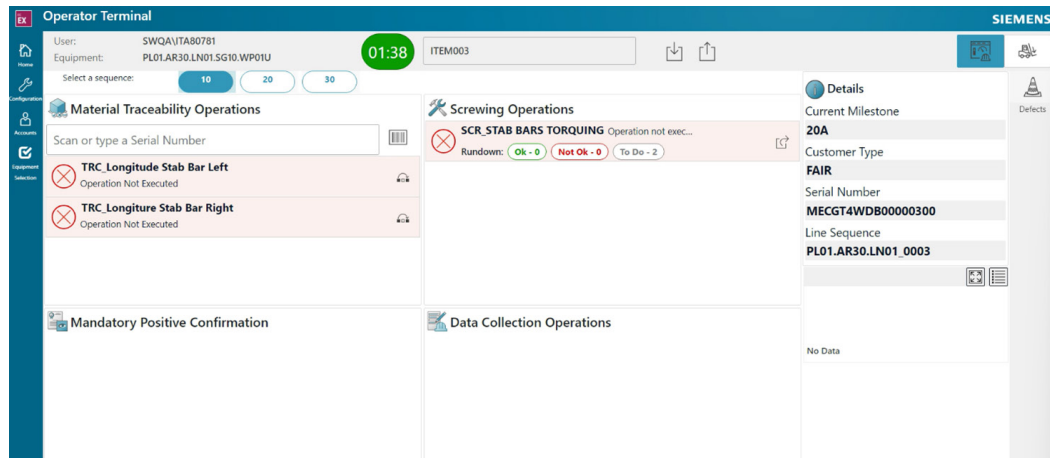
A special operator terminal has been designed for shop floor operators working in factories building complex products, such as aircraft. These kinds of products are characterized by complex structures with many operations and steps and additional documents/images to be reviewed by the operator during their job.

From the complex manufacturing terminal you can perform various actions:

- Preview work order operations and work order steps
- Preview document files
- Preview work instructions
- Start work order operations
- Manage work order operations
- Manage activities for work order operation/step progression
- Manage work instructions
- Use tools
- Consume material tracking units
- Disassemble material tracking units
- Place work orders on hold
- Pause and resume work order operations
- Quality inspections
- Create quality nonconformance
- Complete work order operations



Operator Terminal for Complex Manufacturing.



Operator Terminal for One Piece Flow production.

One Piece Flow App

This provides a screen with a simplified user interface that a company can use to show which product is present and the activities to be done, keeping in mind that few interactions are possible by users due to the fast track time.

From the Operator Terminal in One Piece Flow App, as an Operator, you can perform various actions on a specific material tracking unit (MTU):

- Make the MTU enter and exit the equipment
- Declare milestones and perform the corresponding transitions
- Execute traceability operations
- Browse failures and manage defects
- Execute generic data collection operations
- Execute screwing operations
- Declare the result of a work order operation using mandatory positive confirmations
- If the piece of equipment has been declared a quality gate, manage additional functionalities
- If a line side position is associated to the piece of equipment, manage the line side Inventory and kanban requests for the replenishment of materials

Multi-plant architecture support

Opcenter EX DS supports multi-plant architecture, meaning that it can manage multiple factories or plants from a single central installation. This solution offers configuration both with common settings and plant-specific tuning. It's also possible to implement run-time operations with a multitenancy approach.

The main benefits of a multi-plant scenario are:

- Lower total cost of ownership due to a limited number of servers, updates and patches
- A simpler overall architecture, reducing human error during system alignment
- Shorter rollout time for new plants

Enabling standardization and harmonization implies less configuration effort. The new multi-plant architecture also provides great value for:

- Business continuity: A plant has no downtime during updates to other factories and during rollouts of new plants
- Security and usability: Only the data related to your plant is visible and modifiable
- Robustness: The performance of one plant is not affected by workload peaks or other plants' issues

Industry-specific operator terminal UI

Siemens has introduced Operator Terminal, as part of Opcenter Execution Discrete. Operator Terminal is created precisely to cover specific processes and industries' needs.

These new terminals are low-code user interface (UI) apps, powered by the Mendix™ platform, which is also part of Siemens Xcelerator. The Mendix platform enables our customers and partners to easily personalize the user interface to cover their specific requirements.

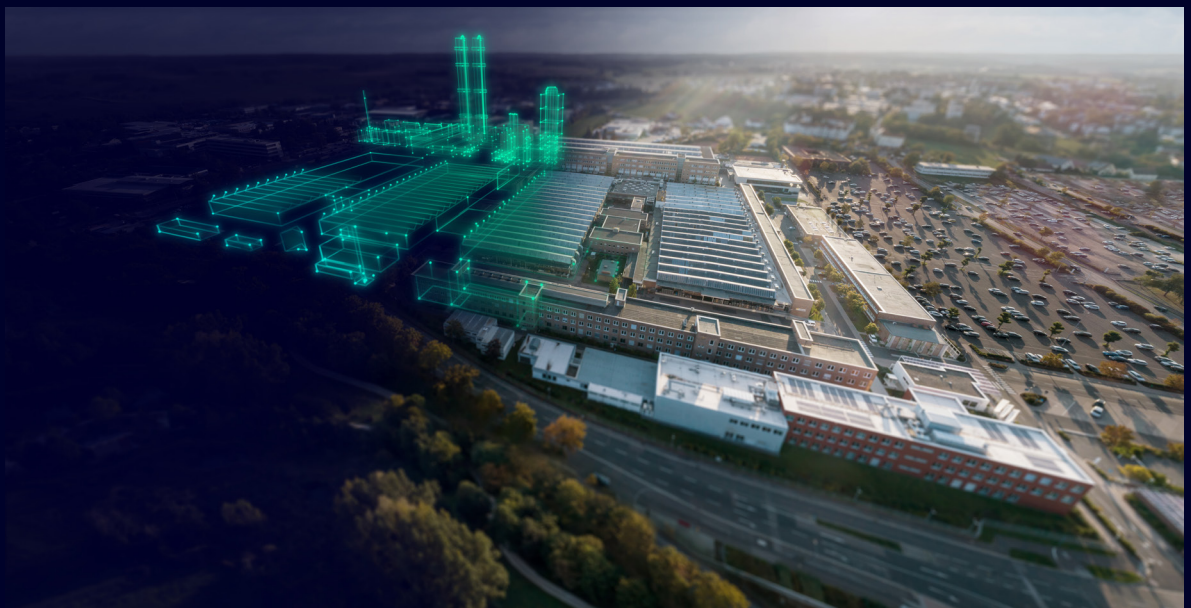
Opcenter Execution Discrete features

User management

User management is fundamental to any system as it permits restricting access to sensitive data while ensuring that only individuals with the appropriate know-how and position within the organization perform certain tasks.

In Opcenter Execution Discrete, the basic entities involved in user management are:

- Users and groups
- Roles
- Certifications (refer to "Certifications" chapter)



Users and groups

In Opcenter Execution Discrete, a user is defined as a person who can access the application. Each user has a login and a password.

The list of Opcenter Execution Discrete users is logically separate from the list of Windows users on the machine where Opcenter Execution Discrete is installed. During installation, a dedicated user (who assumes the super-user role and has administrative rights) is created from a Windows user. Additional users can be created later.

A group represents a set of users who have been categorized according to specific rules. In a Windows operating system, users can be grouped. Opcenter Execution Discrete can use these Windows groups as well as create new groups.



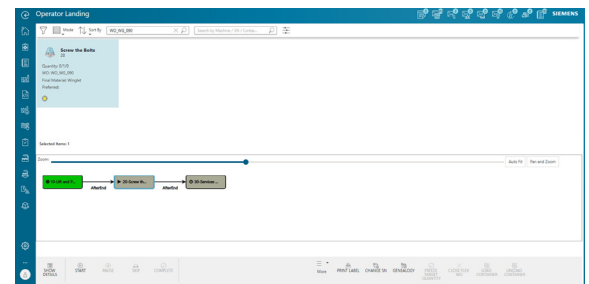
Roles

Roles define which operations a user is authorized to perform; every Opcenter EX DS user has a role.

Opcenter Execution Discrete comes with predefined roles for access control. In addition, you can create custom roles to satisfy specific needs, and assign a role to a single user or to a group of users.

Process management

Select and start work order operations from the operator landing page; other commands are available.



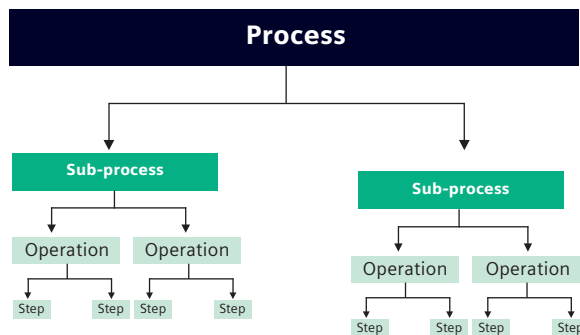
Select and start work order operations from the operator landing page; other commands are available.

The framework for all production engineering is based on processes and how they are sequenced. A process is an abstract representation of the sequence of operations and steps involved in producing a specific product. Processes are high-level outlines that illustrate how to proceed to execute a specific manufacturing activity. A process represents all operations, tools and machines to be used, and materials to be consumed to achieve a particular goal in a production activity that will be executed. Each instance of a process is referred to as a work order. Processes can be defined directly for a specific product, or they can be generic production route templates that apply to several products; in the latter case, product-specific properties will be defined in the production orders derived from generic processes.

The following elements contribute to forming a single process and are listed hierarchically:

- Subprocesses (optional: multiple subprocess levels are supported)
- Process operations
- Process steps (optional)

All processes involved in a production activity are contained in what is known as an as-planned bill of process (BOP); its contents are whatever concurs to manufacturing the product to which the processes refer. In detail, all processes and their sub-elements, all the tools and machines to be used, as well as the materials to be consumed in the specific production activity to be executed, are contained in the as-planned BOP. To simplify the attribution and use of complex processes, you can organize multiple operations (even nested ones) in operation folders.



Process hierarchical structure model.

Using dedicated catalogs (for example: libraries containing all the available processes, operation folders, operations and steps in your system), it is possible to reuse processes, operations and/or steps when configuring your production activity in different contexts within the same production plant.

It is possible to modify a process, making changes as needed; the result is a revision of the original process.

Likewise, revisions can also be made for:

- Subprocesses
- Process operations
- Process steps

All processes have a status that is tracked and managed. For example, they can be active, obsolete, etc.

Subprocesses

In the case of complex production activities, it may be necessary to break down a process into several subprocesses. Subprocesses are made up of process operations, which in turn, and depending on their complexity, may be formed by a series of process steps.

Process operations and process steps

Process operations are the main building blocks of an abstract process: During engineering, a series of process operations are linked to form the backbone of a generic process. Each process operation can exist as the result of linking of various process steps, which are optional. Process operations can be linked to different parent processes or parent subprocesses.

The concepts described in this section apply both in the context of the CLM solution and when processes are defined directly in Opcenter Execution Discrete. In the former case, Teamcenter Manufacturing is the master of process information, and no changes are applied at the Opcenter Execution Discrete level.

Feature management

Users can configure the specific characteristics, with values and options, of the goods that they produce. This can be obtained through the bill-of-features, which works as the central unit to manage all the essential characteristics and all possible variations applicable to a product.

In Opcenter EX DS, it's possible to create qualification criteria based on the features listed in the bills-of-features. When a work order is created from a master plan with this criterion, the work order will automatically contain those features that satisfy the qualification criteria.

Operation work booking

A common requirement during production is to collect all the possible information regarding execution time and location of orders. This information is useful when compared with estimated time to improve order planning and engineering, but it is also useful in tracking the labor time of operators and allocating resources (both human and machine).

To satisfy this requirement, Opcenter Execution Discrete provides these capabilities:

- Track work order execution start/end time
- Track work order due time
- Track execution equipment

This set of information is tracked automatically by the system: The operator simply clicks the start button.



When an operator stops working for any reason (for example, during a lunch break), he/she must interrupt the execution of the operation by clicking the pause button: The system then stops tracking work time and can provide the actual execution and labor time during subsequent analysis (as-built, genealogy).

Operators can resume work at any time by again clicking the start button: The system will resume to track working time and location. Operators click the complete button when they complete operation execution: The working time counter is stopped and the operation is declared completed.

Information collected during this process is typically presented as:

- Genealogy report
- As-built report
- Custom reports

To maximize productivity and minimize equipment downtime, thereby allowing machines to work at full capacity, operations (associated with the same or different work orders) can be grouped by execution.

They are executed together at runtime on the same equipment.

Electronic work instructions

The EWI is a technical package of information defined within the authoring environment and consists of all associated data required within the MOM system to perform the necessary manufacturing, assembly or test activities.

In a paper-based environment, operators can spend hours looking for the correct WI to be used for a specific operation; moreover, the document can be damaged or illegible. Opcenter Execution Discrete provides the operator with only the EWI related to the specific task at hand. However, the document is always in an electronic format that guarantees the usability of the instructions.

It is possible to specify EWIs at different levels in the manufacturing process, which is typically defined hierarchically with two nested levels: operations and steps.

The following types of data are included as part of the EWI and are displayed within the MOM system at the appropriate point of operation:

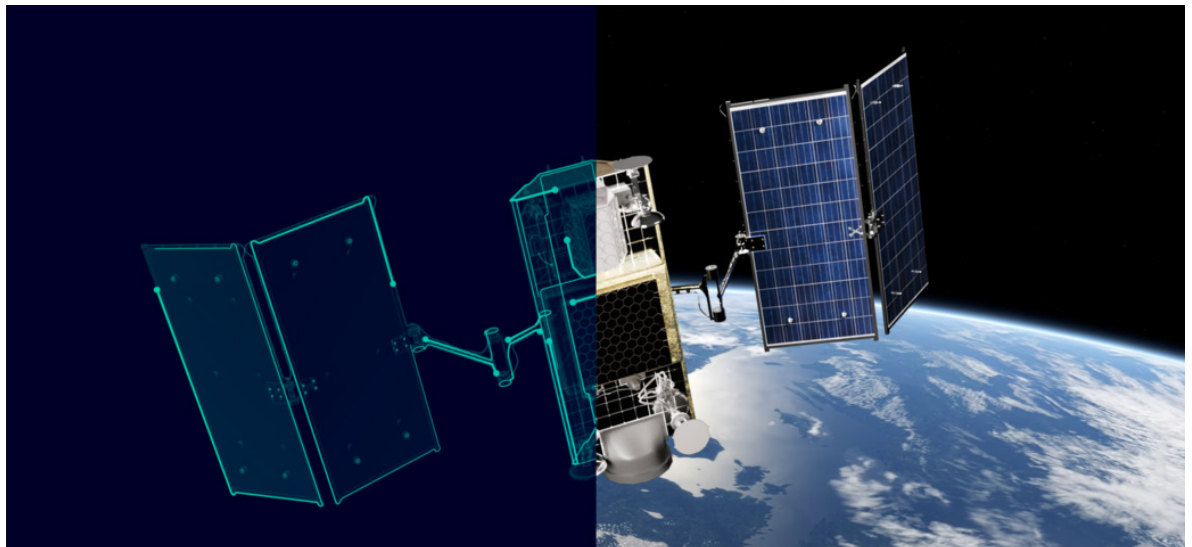
- Operation or step text – instructional text can be authored to guide operators at runtime to perform the right operations in the right sequence. It is also possible to define special notes, warnings and cautions
- Parts to be used at operation/step level – a list of items required at each operation/step with appropriate attributes (part number, description, quantity, classification, type, location, etc.). Part images such as 2D drawings can also be attached
- Resource (tooling) to be used at operation/step level – a list of tools required at each operation/step with appropriate attributes (tool type, description, quantity, classification, location, etc.). Tool images, such as 2D drawings, can also be attached
- Images (2D drawings, photos, etc.) – various media types can be attached at operation/activity level and can be displayed with the appropriate viewer in the MOM system

- Documents (Word documents, Excel spreadsheets, PowerPoint slides and PDF reports/specifications) – various datasets can be attached at operation/step level and can be displayed with the appropriate viewer in the MOM system

The association between an operation and the EWIs to be displayed can be performed manually in the dedicated Opcenter Execution Discrete screen or by downloading the information directly from the PLM system.

- Display files in PLMX Viewer in 3D

Using Opcenter Execution Discrete helps you display PLMX files in 3D to perform your job with greater ease and precision. Operators can have a visual insight on how to perform a certain task thanks to the 3D file visualization. For example, you can display a certain object in 3D to see in detail the exact point where a hole should be drilled or where a rivet should be inserted. However, operators will need to perform additional implementations to fully exploit the functionality.



Material consumption

Opcenter Execution Discrete displays the list of material components assigned to each operation, regardless of whether the process was defined in Opcenter Execution Discrete or transferred from the PLM system. Basically, material components are displayed as instruction information about what is to be consumed. The system allows operators to collect material usage information. Reasons to request operators to declare material usage include:

- Material usage as checklist
- Material usage declaration as error-proofing
- Accurate as-built data collection

Opcenter EX DS can manage several material types.

The most relevant for production are:

- Serialized – operators must insert the serial numbers (S/Ns) of the part to uniquely identify it. The S/N can be inserted using a keyboard or barcode scanner or selected from a list of available numbers. S/N information is available at any time in genealogy and in as-built reporting.
- Not serialized – operators only have to insert the used quantity; this kind applies especially when there is no need to track the used part identifier (bolts, for example).
- Batch managed – operators must insert the identifier of the batch that the used parts are taken from. The identifier can be inserted using a keyboard or a barcode scanner or selected from a list of available identifiers. Batch ID information is available at any time in genealogy and in as-built reporting.



Every time an operator consumes a material inserting a S/N or batch ID, Opcenter Execution Discrete checks whether the specific part is available, whether the S/N is unique, and whether it is not already used or reserved for another work order. It is

also possible to define barcode rules for each material: At runtime the system will validate the scanned barcodes with the predefined rules, preventing the operator from assembling the wrong material.

It is also possible to define co-product materials, secondary goods that are generated during the manufacturing process.

Material pre-kitting

Material pre-kitting is a functionality provided by Opcenter Execution Discrete to assign parts to be used during production to each operation. Production supervisors can preassign S/Ns or batch IDs to an operation; in such cases during production, the operator is not required to enter the used part but must confirm the use of the one already assigned. For a highly regulated environment it is also possible to configure the system to ask the operator to insert the S/N again and let the system validate if this corresponds with the pre-kitted one.

Tool usage

The usage of tools is often required during operation execution; sometimes knowing exactly which tool has been used is irrelevant, but in other instances, it is mandatory information. Opcenter Execution Discrete displays the required tool type in the operation details: Operators can view the list of required tools and may be required to enter the ID of the tool used. To enter the tool ID, operators can use the keyboard or a barcode scanner or select it from a list of available tool IDs.

Data collection

During production, it is often required to collect various manufacturing data manually (for example, dimensions, process parameters, etc.). This information can differ for each work order and work order operation. Opcenter Execution Discrete offers the ability to collect data during the execution of specific operations. Operators on the shop floor execute the required activity and fill in dedicated forms with the required data. All the entered data is

visible in the as-built report screen and genealogy report screen.



Data collection values can be also acquired directly from the automation layer at runtime. You can achieve this by either integrating the Opcenter Execution Foundation Automation Gateway linking machines/data collections to automation node instance parameters or by leveraging Opcenter Connect MOM to read datagrams. A data collection form may be associated with a work order operation or step in its entirety, or to individual serial numbers.

To enable manufacturing data collection, Opcenter EX DS provides an engineering environment for creating forms with fields for specified information. These forms can be linked to operations manually and displayed for operators during production activities while operators are always asked to collect the right set of information for each operation.

When creating forms, it is possible to define:

- Sets of data to be collected
- Type of data to be collected (number, text, etc.)
- Range and limits (Opcenter EX DS will notify the operator if the collected value is out of range)
- Mandatory values (if mandatory values are not collected, it is not possible to complete the operation and proceed with the next one)

Screwing operation management

Using Opcenter Execution Discrete can help you manage screwing operations. Where the integration is correctly configured, Opcenter EX DS will send values to the automation layer and receive the corresponding result, so you can accurately trace the related data during production execution. You can also use screwing tools when executing work orders. A dedicated task on the operator landing page enables you to activate the screwing tools to monitor the result of the operation. In addition, it is possible to see the values collected on the genealogy page and on the workorder history.



Inspection master plans and inspection orders

Opcenter Execution Discrete can let you perform inspection not only during the execution of a work order, but any time it's needed. Customers can use Opcenter EX DS to generate inspection orders in addition to standard work orders. Inspection orders are based on the manufacturing context, specifically the produced material or the piece of equipment producing it. You can use the triggered quality

inspections to manage any of the supported quality characteristics (attributive, variable and visual) as well as any sampling frequency (100 percent time-based or part-based). With the system properly configured, quality's nonconformances are automatically raised in the case of failures traced during the inspection.



Work-order specific, part-based quality inspections

Opcenter EX DS permits users to set part-based quality inspections as specified by the work order in the Bill of Process (BOP). The inspection counter takes into consideration the pieces produced by a specific work order. Users in the operator landing page, can be notified about the approach of a quality inspection through a dedicated indicator displayed by the system inside the work order operation tile.

This indicator is displayed once the value set for the dedicated configuration key is reached.

You can set:

- The percentage of items to be produced that is missing to reach the configured inspection frequency for part-based inspections



Time-based quality inspections

Quality inspections can be activated also on a time-based criterion. The system can be set to trigger the quality inspections according to specified intervals, these specified intervals can be set at specific time intervals (time-based). The system will start the time counter once pieces are started for a specific work order operation and notify the operator that a quality inspection task must be performed when the specified time has passed. At least one quality inspection must be performed to complete the work order operation.

You can set:

- The percentage of time that is missing to reach the configured inspection interval for time-based inspections

Certifications

A certification represents an authorization that is created ad hoc with particular characteristics and then assigned to a user or role and defines the sphere of action within which he/she can operate. Users and roles can be certified to:

- Perform a certain task (that is, start, pause or complete a specific operation)
- View the details of a specified operation

- Operate in a specific location (work center)
- Use a specified machine
- Use and/or produce a specified material

The definition of a certification may include:

- One or more material definitions
- One or more machine definitions
- One or more locations (work centers)
- One or more skills, optionally with their levels
- Any combination of the above

Opcenter Execution Discrete adopts access control through certifications to simplify the task of tracking where within a production plant and who can perform what to produce which materials using which machinery owning which skills.

Possessing a certification that is currently valid is essential for a user/role to perform runtime operations. Whenever a certification is assigned to a user or role, an expiration date is required. The validity of a certificate is not indefinite.

Interlocking checks

The start and completion of an operation (or step) can be governed by the outcome of the interlocking checks enabled for it.

Interlocking checks verify whether one or more conditions have been satisfied in full in relation to the operation or step in question: If the outcome of all these checks is successful, the execution of the operation or step will either be started (inbound interlocking checks satisfied) or completed (outbound interlocking checks satisfied).

If more interlocking checks have been defined, they are executed in parallel. The system provides some out-of-the-box (OOTB) interlocking checks, but it is also possible to create custom ones.



Electronic signature and buy-off

Opcenter Execution Discrete implements electronic signatures during operation work booking (see operation work booking section for more details) to represent validation and buy-off; only certified users can execute and complete an operation and sign it.

The operator or supervisor who has the appropriate authorization oversees signing off on all the operation data, regardless of the users who worked on the operation and filled in checklists or declared tools and material consumption.

For each operation, more than one person can be required to provide electronic signature. The buy-off is recorded in the as-built summary.

Result management

Shop-floor operators can declare a result on completing the operation of each serial number or batch so that the execution of the failed activities can be reiterated (either immediately or later) until their outcome is positive (that is, as expected).

In addition to the native result types provided in Opcenter EX DS to declare positive and negative results, it is possible to configure custom result types that may better satisfy specific needs. After a result has been declared, if necessary, authorized users who possess the appropriate user rights can override its value by performing an amend operation.

It is also possible to amend a result's strategy. For example, let's say that the corrective action initially associated with a result becomes unnecessary or is no longer valid. In this case, depending on the situation, the user can choose to amend the result's strategy by either:

- Removing it so no corrective measure will be adopted
- Switching to a different corrective action



Labor tracking

Opcenter Execution Discrete enables production coordinators to monitor work booking times related to operations.

For each work order operation, Opcenter Execution Discrete displays:

- Status
- Estimated start/end time
- Actual start/end time
- Labor duration

For each work order operation, production coordinators can view time details of each operator. For each operator, Opcenter EX DS provides:

- User identity
- Activity (start, pause and complete)
- Timestamps
- Production coordinators can amend collected data for completed operations both at work order operation and at operator level.

Team work

Teams are groups of users that can be formed for the purpose of performing production operations together.

Although roles represent a more permanent way to group individuals according to their know-how or position within the business hierarchy, teams are flexible and designed to be created on-the-fly and disbanded when no longer necessary (for example, when two or more operators are needed to perform an assembly operation because the part is too large to be assembled by one person).

A single team member can start/pause/complete work order operations on behalf of the entire team. Every one of the group members takes responsibility for the actions of the other team members as a collective responsibility.

Nonproductive activities

A nonproductive activity is an activity performed in a work center that is not directly related to a production cycle and/or to a specific work order, but that still needs to be tracked and recorded.

Some nonproductive activities may be totally unrelated to production entities, while others may be related to them. Examples of nonproductive activities include, for instance, cleaning machines and tools, general maintenance, training, mentoring, assistance, meetings and administrative activities.

Change management

Operators can request changes to a specific work order; the change can affect the BOP or the part list of a specific work order. Exceptional changes affect all processes in the system; changes performed using Opcenter Execution Discrete change management affect only selected work orders.

Possible changes include:

- Add data collection to an operation
- Add operation to a work order
- Repeat a work order operation
- Add part/material to the part list
- Remove part from the part list
- Replace part/material in the part list
- Change part/material quantity in the part list
- Change routing (sequence of operations)
- Delete dependency between operations

Changes can be applied both to scheduled work orders and to in-progress work orders: The changes are totally managed by Opcenter Execution Discrete, so there is no constraint in applying changes at any time (after approval by a production supervisor or quality manager).

Change package

Change package is a functionality that permits users to change a production process in Opcenter EX DS just for a single work order.

This function makes it unnecessary to create a new process, making it ideal when you want to make temporary changes to the production procedure such as using different materials, tools, documents or even modifying the work instructions.

Thanks to change package, it's easier to prototype or track every change compared to the usual production process.

Nonconformance declaration

Opcenter Execution Discrete provides run time quality-related functions that allow tracking of nonconformances and defects and management of their lifecycles through a complete approval process.

Nonconformances are used to determine whether the production in progress needs to be adjusted to achieve better performance levels and better end results. The production coordinator has the task of evaluating (or sentencing) a nonconformance to decide what to do to rectify the situation.

Nonconformances are declared when failures are found in the product that is being manufactured or in the entities involved in the production (machines, material items or tools). These entity types have an associated lifecycle (that is, a set of rules used to specify what happens and which states the entities assume when a nonconformance is declared on them)

In order to streamline the failure attribution, both in the complex manufacturing terminal and in the One Piece Flow app, the menu will show only the failures related to the specific equipment and product. Contextualized failures help maintain an uncluttered interface, reducing the possibility of wrong nonconformances attribution.



Nonconformances include information about:



Operation



Material/tool



Operator who declared the nonconformance



Declaration time



Failure reason



Severity



Description



Status



Quantity



Work center

Nonconformance management

To close a nonconformance, a quality manager can make decisions according to a specific lifecycle: This lifecycle can be configured according to customer needs. By default, Opcenter Execution Discrete already provides a lifecycle with the following actions:

- Return to work – defect is tracked in MOM and the operator can return to working on the work order
- Scrap – the defect cannot be solved and the part must be scrapped
- Rework – applying a rework operation will solve the problem (see rework process section for more information)
- Change – apply a change to the work order BOP or bill-of-materials (BOM) to solve the issue

Nonconformances include information about:

- Concession – leave the nonconformance pending, awaiting decision
- Hold work center – prevent executing any operation in the specified working area
- Send to engineering – in the case of integration with Teamcenter Manufacturing, this choice will feed back the details to engineering, with the link to the relevant genealogy.



Opcenter EX DS can associate specific rework processes with each defect configured in the system.

Rework process

One of the possible options to fix a failure is to apply a rework process. When a quality manager decides to apply a rework on a specific defect, the system displays a list of possible rework processes according to the defect that was declared. The list of rework processes must be configured in advance in Opcenter Execution Discrete; rework processes can be created manually at the MOM level or downloaded from the PLM system.

Opcenter EX DS can associate specific rework processes with each defect configured in the system. Once the quality manager selects the correct rework process, the system creates a rework order based on that process and the operator can view the rework operations to be executed to fix the problem.

A rework order is identical to a work order from the point of view of Opcenter Execution Discrete in that it includes the following information:

- Working area
- Electronic work instructions (EWI)

- Date/time information
- Materials
- Tools
- Part number
- Serial number
- All information about a rework order is visible both in the genealogy report and in the as-built report.

Preventing operation work booking

There can be situations when it is necessary to prevent working on specific work orders or work centers (quality audits, equipment maintenance and equipment problems, for example). To accommodate these situations, Opcenter EX DS provides the ability to set work orders and work centers on hold; this means that it will not be possible to work on the held-up item until a production coordinator removes the hold. Setting status to hold is an action that can be performed both by operators and by production coordinators.

Production execution in offline mode

Opcenter EX DS comes with the capability to execute production in offline mode (environments without connectivity to the Opcenter EX DS server).

In such cases, if a dedicated app is installed on mobile devices, shop floor operators can manage operations directly from their mobile devices.

Once selected for offline execution and their content is downloaded on the mobile device, operations remain visible in the operator landing page. However, no actions are permitted: Operations remain locked until they are checked in again.

The following actions can be performed while working offline:

- Starting work order operations and steps
 - Pausing work order operations
 - Completing work order operations and steps
 - Consuming materials
 - Using tools
 - Displaying documents
 - Collecting data
- Uploading documents
 - Creating quality nonconformances
- As an operator, you can:
- Perform the checkout of work order operations on the mobile device and thus implicitly start offline sessions
 - See the content of the related offline session (in terms of involved work order operations) from the offline sessions page
 - Upload production execution data from the mobile device to Opcenter EX DS once the work order operations are completed, or in case you want to proceed with execution in online mode
 - Amend the content of uploaded offline actions in case of failures
 - Perform the check-in of offline actions and offline sessions to conclude production execution in offline mode



Order WIP monitoring

Production coordinators and operators need an accurate view of what is taking place on the shop floor so they can make the right decisions to streamline production. Examples include:

- Which work orders are currently being processed
- Which plant is involved
- How much of a work order has been completed
- The outcome of the production of a certain product (that is, the quantities of what has been produced and what has been scrapped)

To satisfy your customers with the best possible product in the briefest time, it is essential that you have maximum visibility into WIPs. Opcenter Execution Discrete offers a dedicated WIP screen for viewing the progress of the execution of the work orders. The screen displays all work orders, with an indication of the final product being produced and the current percentage of completion, as well as the plant of execution.

By selecting a specific work order, you can view information related to its operations (status, as well as produced and scrapped quantities).

Workload distribution

At shift start, production coordinators or team leaders can check the work schedule assigned to the job shop area they are responsible for, rearrange it as appropriate and distribute operations among their team members based on skills and availability.

This is most effective when operations modeled in the processes have minimum operator skill requirements for their execution.

When such association is performed, operators logging into Opcenter EX DS will find operations directly assigned to them. Of course, it is possible to assign the same operation to any number of operators.

Splitting a released order

When required, a manager can split an already released work order into several suborders. To do this, Opcenter Execution Discrete can be used to provide split functionality. This functionality can split a work order according to the following criteria:

- By size, to split an order into orders of the specified size
- By number, to split an order into the specified number of orders
- By copy, to split the order into two orders: one of a specified size and the remaining size assigned to the original order

Opcenter Execution Discrete optimizes order visibility and workload distribution for efficient production decisions and customer satisfaction

As built

The standard as-built report page of Opcenter Execution Discrete contains information related to a specific work order.

Work order data is displayed in a flat way because as built does not contain information related to suborders.

The following information is displayed:

- List of operations, with status, estimated/actual start and end date, quantity
- List of steps
- List of materials that have been assembled with their quantities and/or serial numbers
- List of co-product materials with their quantities and/or serial numbers
- List of notes that have been opened and closed by operators
- Personnel log related to an operation
- Data collection values
- List of tools
- List of transferred CNC part programs or AM print job files
- List of associated rework orders
- List of changes

Genealogy

Opcenter Execution Discrete tracks information related to material consumption/assembly/disassembly. The genealogy report screen displays data related to a batch, serial number or work order in a tree view.

For each identified material that is produced the system displays:

- Operations performed to produce the material
- Consumed materials
 - Quantity
 - Material definition
 - Batch ID or serial number
- Used work center
- Acquired data collection
- Tools used
 - Tool definition
 - Quantity
- Nonconformances
- Operators involved
 - Role
 - Start/end activity time

If a work order consumes materials produced by other orders (subassembly), all the order information is shown in the main work order genealogy tree.

Opcenter EX DS provides both forward and backward genealogy: A production coordinator or operator enters the desired serial number or batch ID, and the genealogy report shows how it has been produced and/or where it has been consumed.

Additive manufacturing

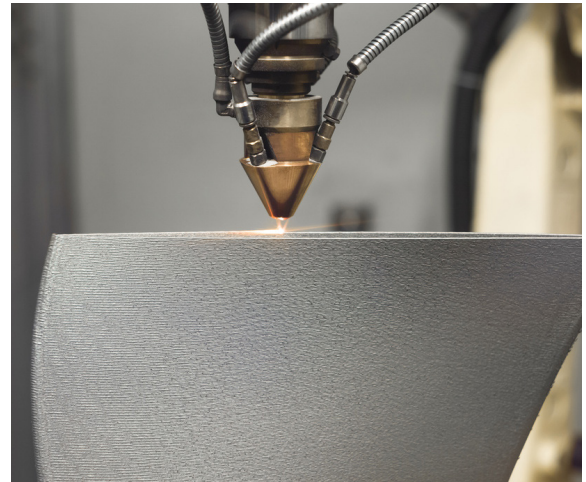
Additive manufacturing is an industrial process used to create a three-dimensional object in which successive layers of material (typically metal powders, plastic, concrete) are formed using computer control. Opcenter Execution Discrete supports additive manufacturing through the following functions.

- “Print job files” management – It is a file that contains information used by a 3D printer to create products by means of additive manufacturing processes. Using custom plugins, Opcenter EX DS can retrieve the file from a print job file repository, present the print job file to the shop floor operator during operation execution and download it on the correct 3D printer.

Print job files can be associated with a single work order operation or with an execution group – their contents can be subsequently transferred as needed to the machine associated with the execution group. Thanks to this possibility, you can launch production as specified in the print job files for all the work order operations making up the execution group in a homogeneous manner

- Track and display the genealogy of powder material batches – additive manufacturing material is available as powder material batches. Each batch represents the container that holds the powder material item. A powder material batch is thus raw material for a 3D printing operation. Opcenter Execution Discrete supports the capability of reusing powder material from multiple batches. Powder material batches can also be split and mixed to form new batches. Powder material batches assume a status and thus have lifecycles. The history of batches mixing is called powder material genealogy.

- Track and display the lifecycle of substrates: A substrate is the build plate upon which 3D objects are printed by using a 3D printer. Since final items are developed upon substrates, Opcenter Execution Discrete treats substrates as specialized tools, which is why they are created as tool definitions and instantiated as tool entities. Substrates are configured and associated with work order operations. The substrate lifecycle represents the states that a substrate assumes, and transitions to, because of the operations performed on it.



Opcenter EX DS features for intraplant logistics

Handling units and transport operations

When a logistic request is declared, it can be accepted to start the movement of the required item or rejected. When accepting a logistic request, it is mandatory that at least one source buffer be specified.

When a logistic request is accepted, a new transport operation to fulfill the request is automatically generated.

The various states of the transport operation specify the various phases of the transport operation's execution.

Once the transport operation has been released and appropriately configured, the transport operation will be started. The required item(s) will be pulled from a source buffer and then placed into a handling unit.

Handling units are designed specifically to identify a set of materials that must be moved together from source to destination. Handling units can start to proceed toward the destination buffer if they are in dispatchable status. Once the handling unit is set in motion, it is in on route status: Its contents are transported to the destination buffer. At this point, the transport operation has been completed and the contents of the handling unit can be unloaded.

The transport operation history traces the details of the operation's execution, whereas the handling unit history traces the various phases of the handling unit's progression.

Containers and container types

Containers are entities configured to hold and move semifinished products during the production process. Containers represent physical entities where the materials can be loaded and stored for the time between one operation and the next. Containers can be re-used.

It is possible to define templates (container types) from which many different containers can be defined inheriting the same configurations and associated documents.

Transportation management

All activities regarding the transportation of items within the boundaries of a plant can be classified as related to transportation management, also referred to as intraplant logistics (IPL).

Here are some examples of such activities:

- Raw materials are moved from a storage area to the machine that will process them
- Semifinished products are transported from one machine to another so that they can undergo additional processing
- Final materials are moved to another storage area prior to being packaged and subsequently shipped out from the plant
- A specific raw material is transported upon request from a storage area to a specific location inside the plant to permit the continuation of production activities
- A defective piece is pulled from the normal flow of activities and moved to a specific location so that it can be checked, reworked or scrapped

Opcenter EX DS efficiently manages intraplant logistics with transport operations, handling units, and container management integration



Logistic classes

A logistic class groups similar materials or tool definitions for transportation or packaging.

Opcenter EX DS comes with a predefined default logistic class, but it is possible to create custom logistic classes tailored to your needs.

Buffer definitions and buffers

Buffer definition

A buffer definition is an abstract representation of a specific area or accessory (for example, a wagon or cart) used to store items. The configuration of a buffer definition considers the maximum weight, maximum volume or maximum quantity, as well as the unit of measure to be used when defining the overall capacity allowed. It is possible to configure a buffer definition to allow the storage only of specific materials and/or logistic classes, specifying minimum and maximum quantities, as well as threshold and target quantities for automatic replenishment.

Buffer

A buffer is the runtime instantiation of a buffer definition; therefore, it inherits its configuration. It represents the actual area or accessory for storing specific material to be used or consumed during production within the plant.

Logistic requests

Declaring a logistic request is essential to transportation management within your production plant as it specifies which materials are required and where they need to go.

Automatic logistic request generation is the most common scenario. By importing a dedicated signal rule installed with Opcenter Execution Discrete, logistic requests are generated automatically by the system whenever the buffer level falls below a defined threshold.

However, it is also possible to declare logistic requests manually, if desired. A manual logistic request can consist in a single material request.

Material request and transport operation improvement

Declaring a logistic request is easier and quicker since all system-generated parameters are automatically filled. In addition, the management of existing logistic requests has been improved, providing the subscription to notifications that are sent whenever a new one is declared and the possibility of sorting them by priority to identify the most urgent. At run time, if the operator chooses to

enable the automatic consumption of batches, the system automatically consumes the batches contained in the buffer associated with the active machine instead of creating a batch on-the-fly.

Kanban calls and line side position management

Line side positions represent specific areas or accessories (for example, racks) allocated to store materials within the manufacturing environment to constitute what can be called a line side inventory. Line side positions and related kanban calls can be managed either manually or automatically if properly configured at run time. They can be configured specifying the initial quantity and the maximum capacity allowed. In case of automatically managed line side positions, it's possible to assign thresholds to set target quantities and priorities for replenishment. When the threshold is reached or falls below the configured value, a Kanban call is sent to the warehouse to request a replenishment using a kanban output message.



Collaborations

Closed-loop manufacturing enables customers to seamlessly unite product engineering and process planning with production execution; this is a key differentiator of the Siemens portfolio.

Closed-loop manufacturing execution

Opcenter Execution Discrete works in conjunction with Teamcenter Manufacturing and Teamcenter Quality to deliver a holistic vision through superior information access across different business domains. A tight relationship between the two products supports efficient engineering changes. Any change defined at the manufacturing planning level can be considered and implemented quickly and properly at the shop floor level by means of accurate and repeatable communication.

Downstream from PLM to MOM, Opcenter EX DS supports:

- A consistent view of manufacturing technical information authored in Teamcenter Manufacturing, including the failure catalog and quality characteristics authored in Teamcenter Quality
- Real-time data views in Teamcenter Manufacturing as rationale for manufacturing engineers before releasing changes to execution
- A structured model of the manufacturing plant in Teamcenter Manufacturing, enabling manufacturing engineers to better detail the content of the bill of process

Upstream from MOM to PLM, Opcenter EX DS provides out-of-the-box capabilities to create issue reports in Teamcenter Manufacturing (Teamcenter Issue Management) and to enrich them with relevant content.

The integration between Opcenter Execution Discrete and Teamcenter Manufacturing is available only for selected product versions; please refer to specific documentation.

Opcenter Scheduling integration

As Opcenter Execution Discrete is focused on operations and the work centers where such operations are executed, the ability to schedule operations based on constraints provides a powerful tool to optimize activities and fulfill planned delivery time.

Operations inside Opcenter EX DS can be assigned to a work center.

Production planners can retrieve the set of operations and their work center inside a predefined time interval using Opcenter Scheduling, using it to create the best scheduling and push back scheduling proposals to Opcenter EX DS.

Supervisors can always adapt it to specific, real-time needs.

Opcenter Execution Discrete supports two-way communication with Opcenter Scheduling:

1. The Opcenter EX DS operator can access all planned operations available in the work center sorted by estimated start time. Operations will also have suggested equipment on which the operation should be started, so that the operator will have more information about when and where to start the operation.
2. Production planners have access to the list of operations, and according to the constraints can schedule them to streamline equipment utilization. Planners can also be informed of any order/operation in scheduling that has been modified at the shop floor. The integration between Opcenter Execution Discrete and Opcenter Scheduling is available only for selected product versions; please refer to specific documentation.

Siemens Teamcenter Share integration

Siemens Teamcenter Share is a cloud-based collaboration service for software subscriptions, which provides secure cloud storage for synchronizing data across the Siemens Xcelerator.

Opcenter EX DS is part of Siemens Teamcenter Share to cover the following use cases:

1. **Intracompany collaboration:** Sharing manufacturing and quality information with colleagues

that don't have immediate access to Opcenter 1EX DS

- Documents captured from the shop floor during production, for example, test results, measurement results, etc.
- Nonconformance documents, including their original and marked up attachments

This removes the constraint that the involved user must have dedicated and immediate access to Opcenter EX DS or Teamcenter MPP, or both.

2. **External collaboration:** Sharing product history information with installation and servicing personnel in the field (this depends on network security configuration)

Additive manufacturing network integration

Opcenter EX DS can be integrated with the Siemens Additive Manufacturing Network, which is a Siemens Digital Industries Software cloud-based solution designed to optimize execution activities in additive manufacturing contexts, from sales orders to delivery.

With this integration, a series of items defined in the Additive Manufacturing Network can be imported into Opcenter EX DS to streamline shop floor operations. Additionally, the Additive Manufacturing Network can be notified of any changes in Opcenter EX DS production status. This provides overall visibility on the production process.

Integration with automation, physical devices and third-party systems system



CNC integration

Opcenter EX DS is frequently used to manage production steps that involve machining via CNC devices. The way such devices are operated may vary according to several factors including material, machine, tools and operation. The CNC part program is the element that drives a CNC device to work as requested by Opcenter Execution Discrete. In this context, it is essential to have an automatic transfer of the CNC part program to CNC devices.

Part program packages defined in an external DNC system can be imported into Opcenter Execution Discrete and associated with the defined machines. At runtime, the system prompts the operator for the correct program to download to the machine; upon operator confirmation, Opcenter Execution Discrete triggers the DNC system to download the correct part program to the correct CNC machine.

The DNC system is external to Opcenter Execution Discrete and includes the capability to write a custom connector to any DNC system available at the customer's site.

Setpoints

Setpoints are used to drive how a machine or a tool must behave at runtime, thereby eliminating the need for shopfloor operators to perform manual adjustments.

On their own, setpoints are merely empty containers: In order to function, they must be filled with one or more variables.

For example, if a certain machine must reach a certain temperature before it can be used in executing a work order operation, then the setpoint to be associated to that specific machine will contain variable "temperature," the value of which is equal to that specific temperature.

During runtime, the setpoint variable's value will be transferred to the machine: The machine, which is linked to the automation layer, must necessarily reach the temperature specified in the setpoint before it can be used.

Setpoints can be associated to the following items, thus declaring their compatibility:

- Equipment types and equipment configurations
- Tool definitions and tools

If you associate a setpoint to an equipment type or tool definition, the same setpoint will be inherited by all machines or tools generated from the equipment type or tool definition to which the setpoint was associated.

Structured-message exchange

Certain activities can be automated during production execution by adopting a “structured-message exchange” approach.

With appropriate scenario configuration in Opcenter Execution Discrete, this approach can be adopted to exchange messages between the MES layer and the shop floor to automatically:

- Start and complete operations
- Create and resolve nonconformances by machines or work centers
- Consume material during the execution of operations
- Collect data and quality characteristics during the execution of operations
- Use tools during the execution of operations

Opcenter EX DS can exchange messages through interaction with the Opcenter Connect MOM product.

Barcode management

Opcenter Execution Discrete provides the possibility of configuring barcode rules to validate a barcode string.

Once created, barcode rules are empty containers which can be associated with rule parts in any combination you deem necessary, each of them containing a regular expression that will be used to validate the barcode string.

Whenever a barcode string is received from a barcode reader, the system automatically retrieves the corresponding rule from the associated material. If the rule is not found, the system retrieves it from the functional code or, as a last option, from the default barcode rule that is provided out-of-the-box and can be set thanks to a dedicated configuration key.

As a product engineer or production coordinator, you can:

- Enable the dedicated configuration key for setting a default barcode rule
- Create a barcode rule
- Configure the rule parts
- Associate a material to the barcode rule
- Associate a functional code to the barcode rule

As an operator, you can scan the barcode to validate the material to be consumed. If it matches the barcode rule, the material can be consumed.



Semiautomatic acquisition of values

If the system is properly configured and linked to the shop floor via the Opcenter Execution Foundation Automation Gateway App, it is possible to acquire values from the field.

The operator can acquire the values related to data collections, tools/substrates and material tracking units without the need to insert them manually.

The semiautomatic acquisition is possible due to the mapping of parameters with the variables coming from the field, via the Opcenter Execution Foundation Automation Gateway App.

For data collections, the field values acquired are related to work instruction parameters.

For materials, the operator can acquire the serial number, batch ID or quantity to be consumed during an assembly operation, or he/she can enter them manually.

For tools/substrates, the operator can acquire the ID of the tool/substrate to be used, the usage counter and the time duration, or enter them manually.

Information related to the acquisition from the field is traced in both the as-built and genealogy pages.

Label printing

Opcenter Execution Discrete offers the possibility of printing labels containing barcodes, text or images for:

- Work orders
- Work order operations
- Material tracking units



Conclusion

Siemens Digital Industries Software is driving transformation to enable a digital enterprise where engineering, manufacturing and electronics design meet tomorrow. Siemens Xcelerator helps companies of all sizes create and leverage a comprehensive digital twin that provides organizations with new insights, opportunities and levels of automation to drive innovation.

As part of the Siemens Xcelerator portfolio, Opcenter Execution Discrete is used to implement a tailored MES for complex job-shop organized factories.

Thanks to the long list of out-of-the-box features provided, as well as the innovative technology that delivers scalability and multi-plant architecture, Opcenter EX DS is well suited to help aerospace and defense manufacturers to realize Industry 4.0.

Siemens Digital Industries Software

Americas: 1 800 498 5351

EMEA: 00 800 70002222

Asia-Pacific: 001 800 03061910

For additional numbers, click [here](#).

Siemens Digital Industries Software helps organizations of all sizes digitally transform using software, hardware and services from the Siemens Xcelerator business platform. Siemens' software and the comprehensive digital twin enable companies to optimize their design, engineering and manufacturing processes to turn today's ideas into the sustainable products of the future. From chips to entire systems, from product to process, across all industries, [Siemens Digital Industries Software](#) is where today meets tomorrow.